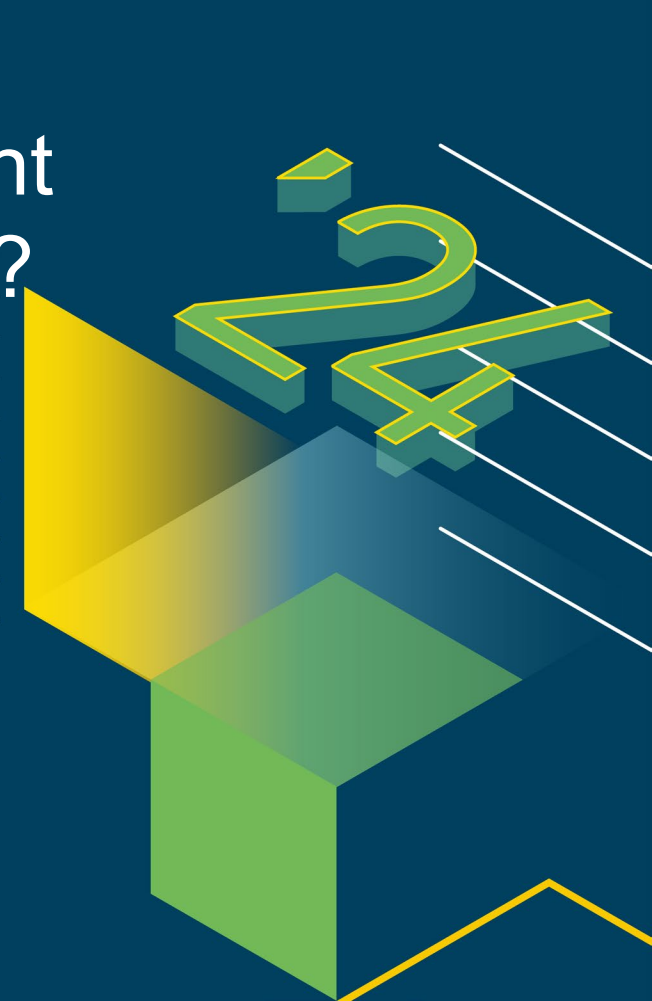


Comment Bechtle et Pure Storage transforment les problèmes des entreprises en innovations ?

Bechtle IT Forum | 11.06.2024 | SwissTech Convention Center

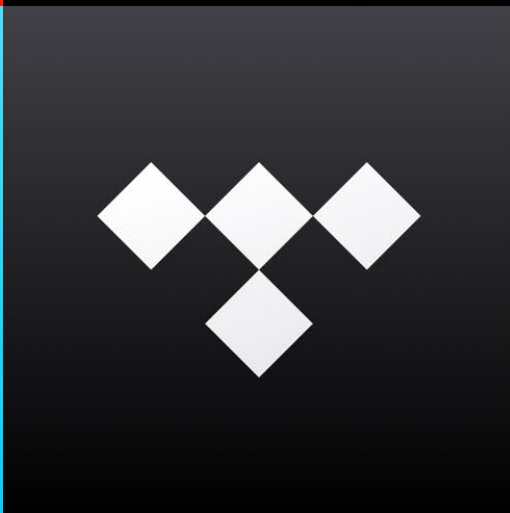
Franck Moreau, Account Executive, Pure Storage
Lionnel Thiery Senior Systems Engineer Data Center, Bechtle Suisse



2009









Collection and Recycling Arrangements in Switzerland



The Waste Electrical and Electronic Equipment (WEEE) Directive is a European Directive which requires producers to make arrangements for the collection and recycling of WEEE. The Directive is transposed into national law by EU Member States. Switzerland is not a member of the European Union or of the European Economic Area, and therefore has no obligation to follow EU policy.

Producer responsibility for the take-back of electrical and electronic equipment in Switzerland is covered by the Ordinance on the Return, Take-back and Disposal of Electrical and Electronic Equipment (ORDEE). The Ordinance came into force on July 1st 1998 and an amendment came into force in January 2005 which extended the scope of the Ordinance to increase the number of categories of electrical and electronic equipment which are covered.

The requirements of ORDEE are different from the requirements of the WEEE Directive.

Pure Storage products are sold directly to end-users by the Pure Storage sales office in Switzerland. Therefore, Pure Storage places the products on the market for the first time in Switzerland and is classed as a producer. Thus Pure Storage has the legal responsibility to:

- Register as the WEEE producer in Switzerland.
- Provide arrangements for collection and recycling of WEEE arising from Pure Storage products that the dealer and distributor sells in Switzerland.

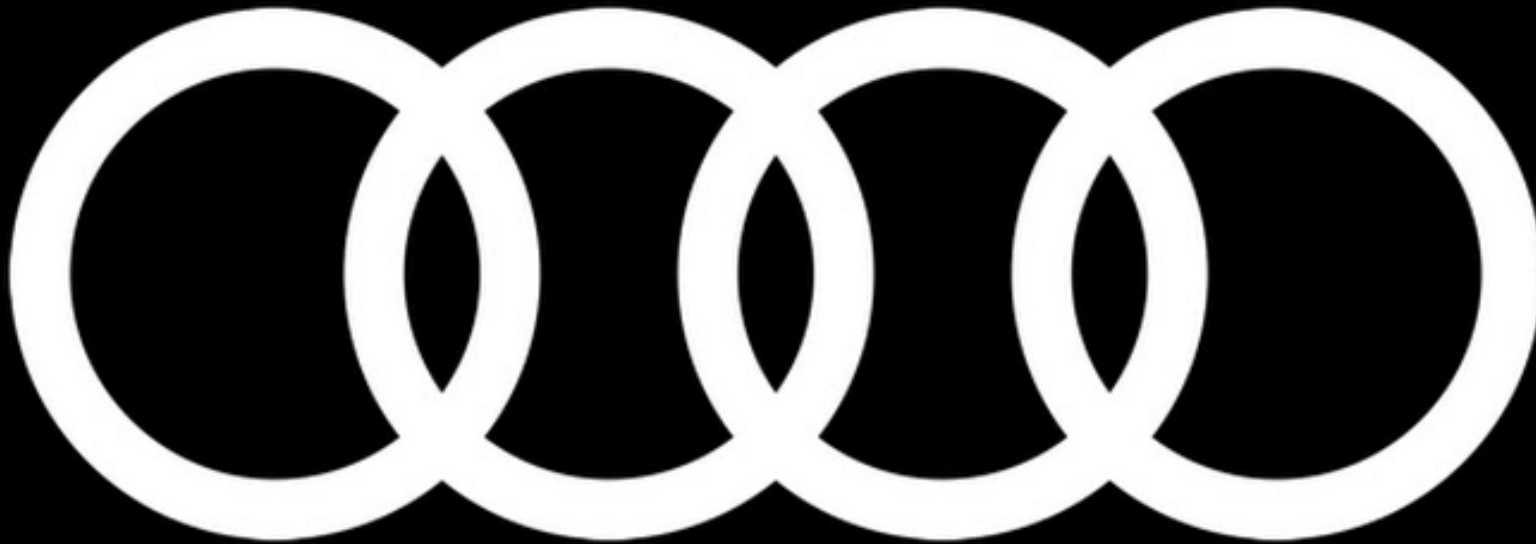
Pure Storage has decided to join the compliance scheme SWICO in Switzerland to manage all aspects of WEEE collection and recycling in Switzerland. Please contact SWICO below to arrange collection of the WEEE.

Compliance Scheme SWICO

Telephone Number
+41 44 446 90 94

Fax Number
+41 44 446 90 91

Email
info@swicorecycling.ch







Portworx Enterprise

The Kubernetes Data Platform to deliver a multi-cloud ready, modern data services on any infrastructure

Any App

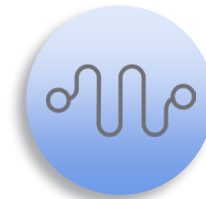
DATABASE: cassandra, MySQL, Couchbase
ANALYTICS: spark, CLouDERA
STREAMING: kafka, RabbitMQ
SEARCH/LOG: elastic, splunk, Solr
5G/IoT: TensorFlow
AI/ML: PyTorch

Any kubernetes Distribution

OPENS SHIFT Amazon EKS GKE AKS Tanzu



Developer Agility



Multi-Cloud/Hybrid Cloud Ready



Enterprise Scale



The Kubernetes Data Platform

PX-Store PX-Migrate PX-DR PX-Secure PX-Autopilot PX-Backup

Any Cloud

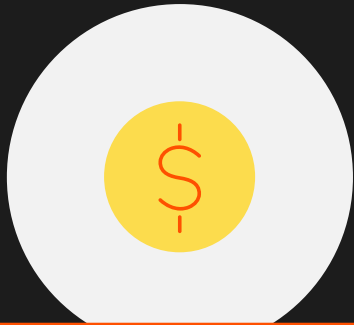
aws

Portworx CSI

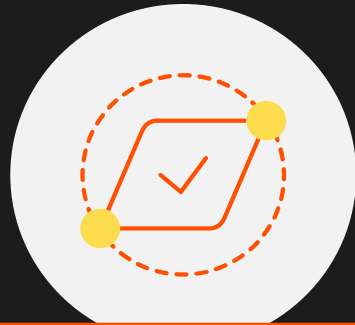
FlashArray /X FlashArray /C
 FlashBlade /FB

Any Infrastructure

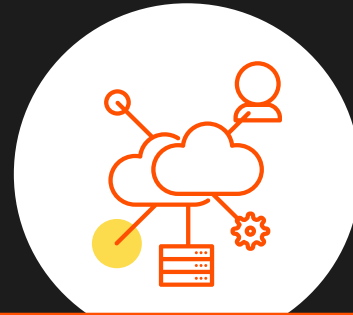
Bare Metal DELL vmware IBM Hewlett Packard Enterprise NetApp PURE STORAGE



Costs



**Automatic
Provisionning**

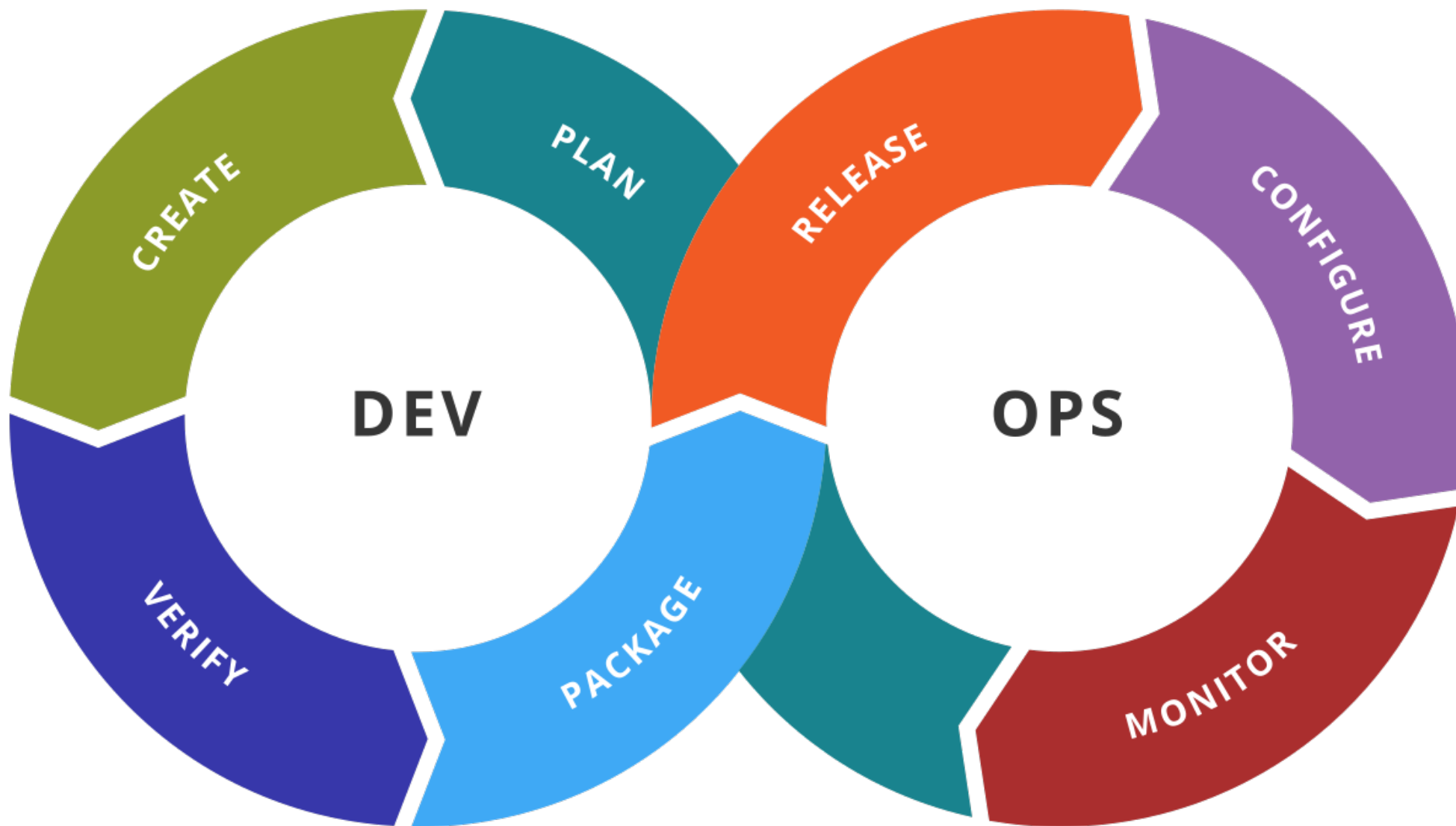


**Super CSI, Encryption,
DR, Migrate, Backup**



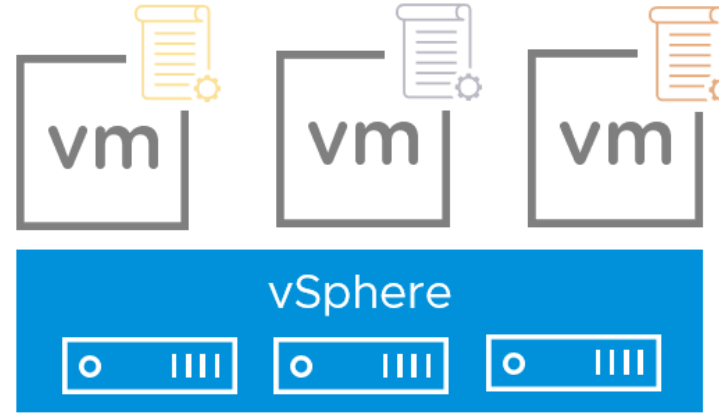
**Accelerate Audi
Innovation**







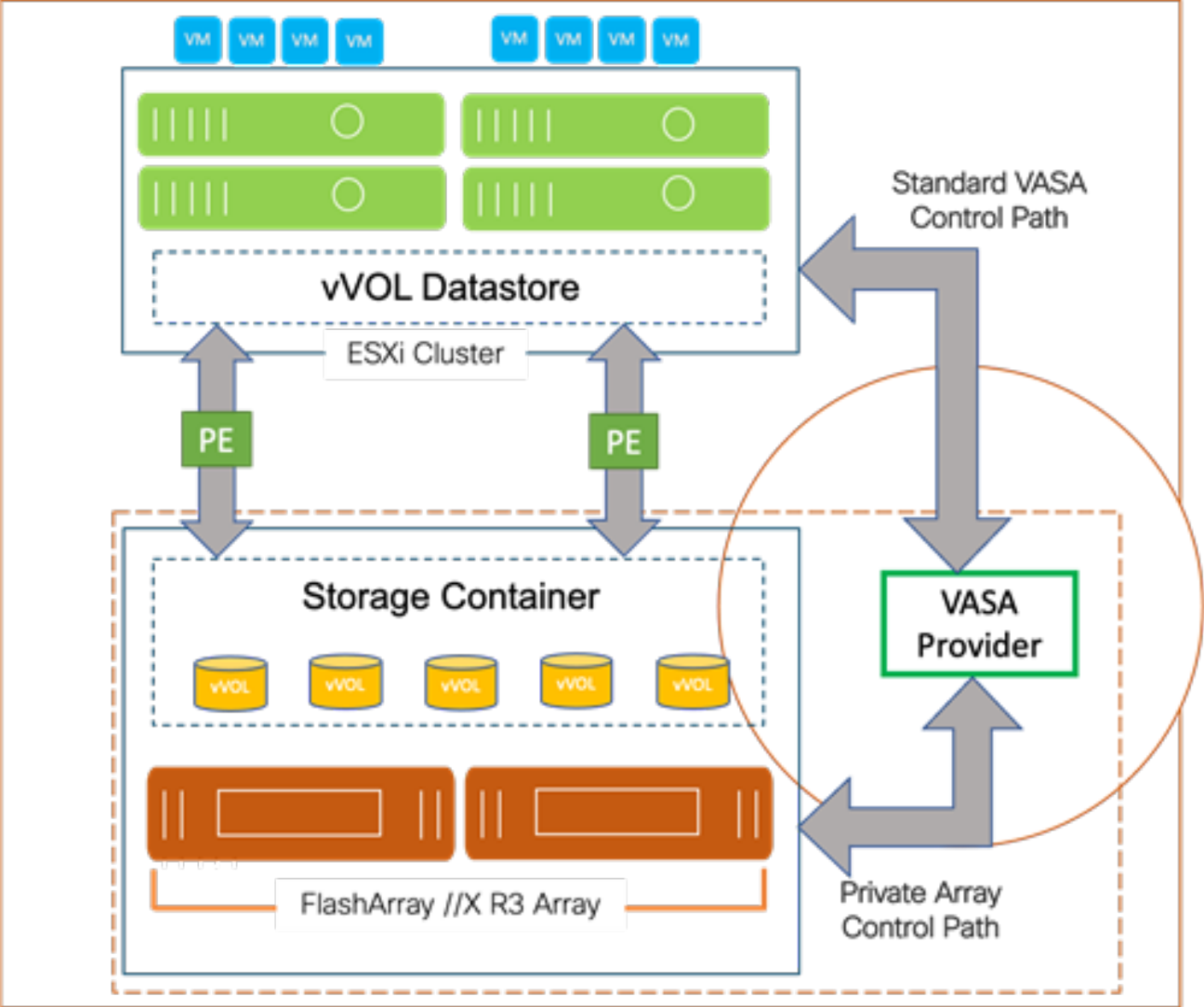
Storage Policies



Published Capabilities

- Encryption
- Deduplication
- Replication
- QoS
- Disk Type



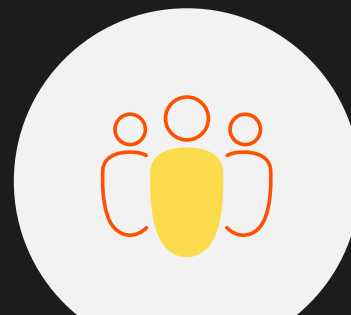




**Application
Development
performance**



**vVol
implementation**

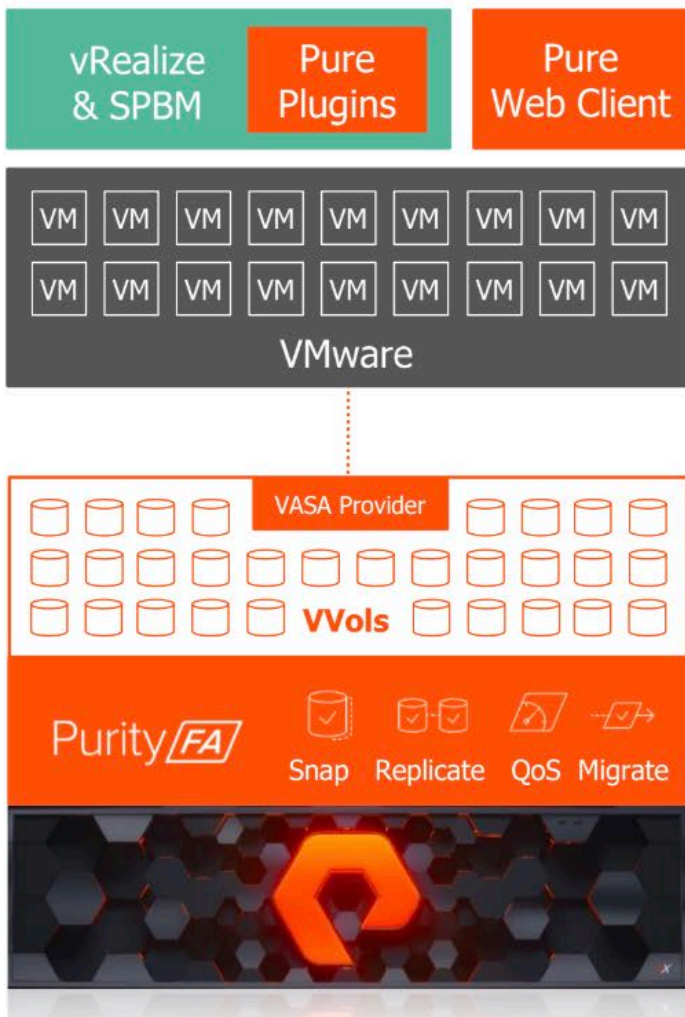


**Simplified operations
for IT and Dev**



**Improve CI/CD
pipeline dev.**

Purity **FA** VVols



NEW INTRODUCING Purity **FA** VVOLS

Assure Per-VM SLAs

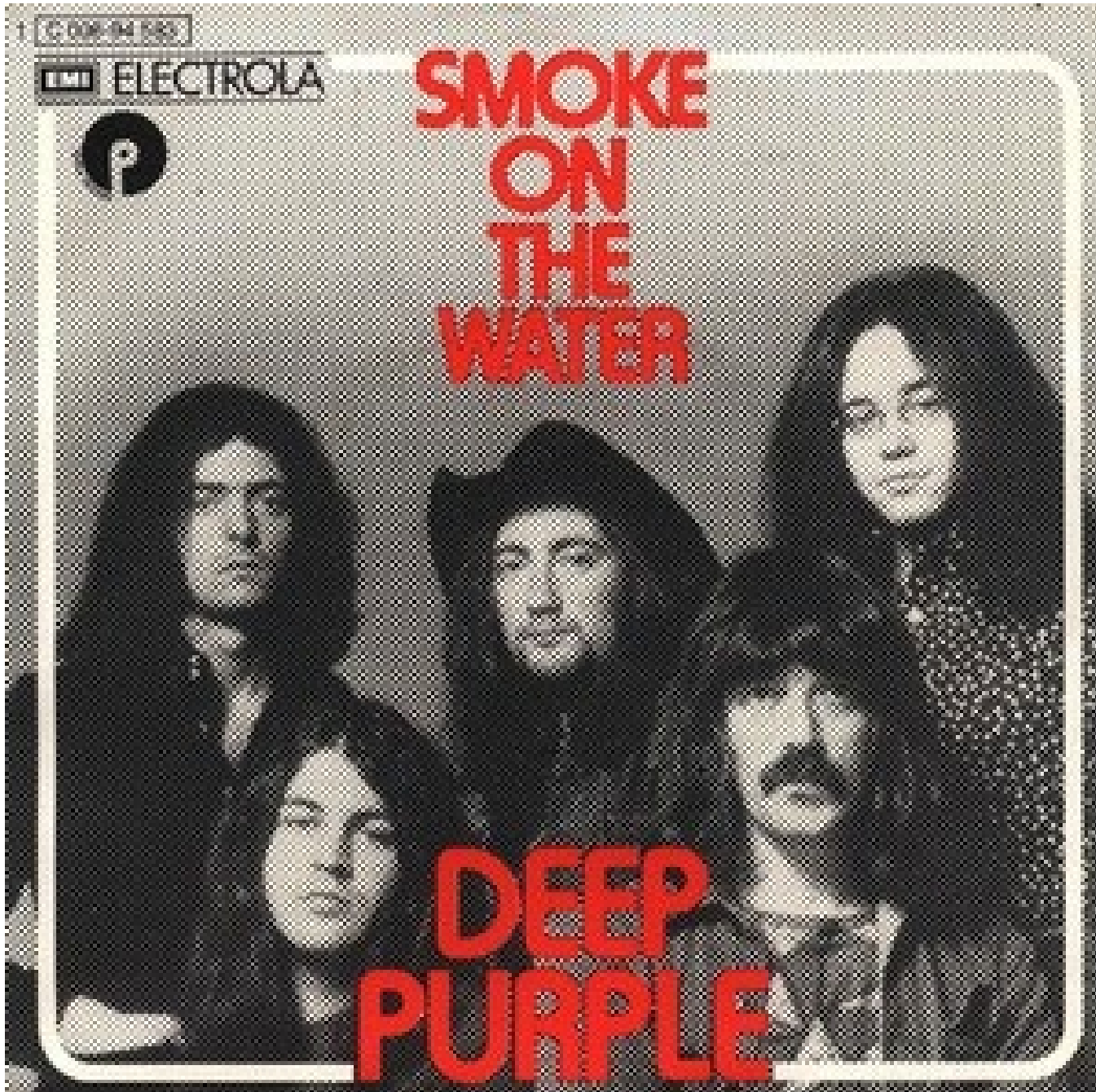
- Per-VM snaps, replication, QoS accelerated by FlashArray
- Rapid troubleshooting with Per-VM stats & reporting
- Automated compliance management

Simplify Per-VM Management

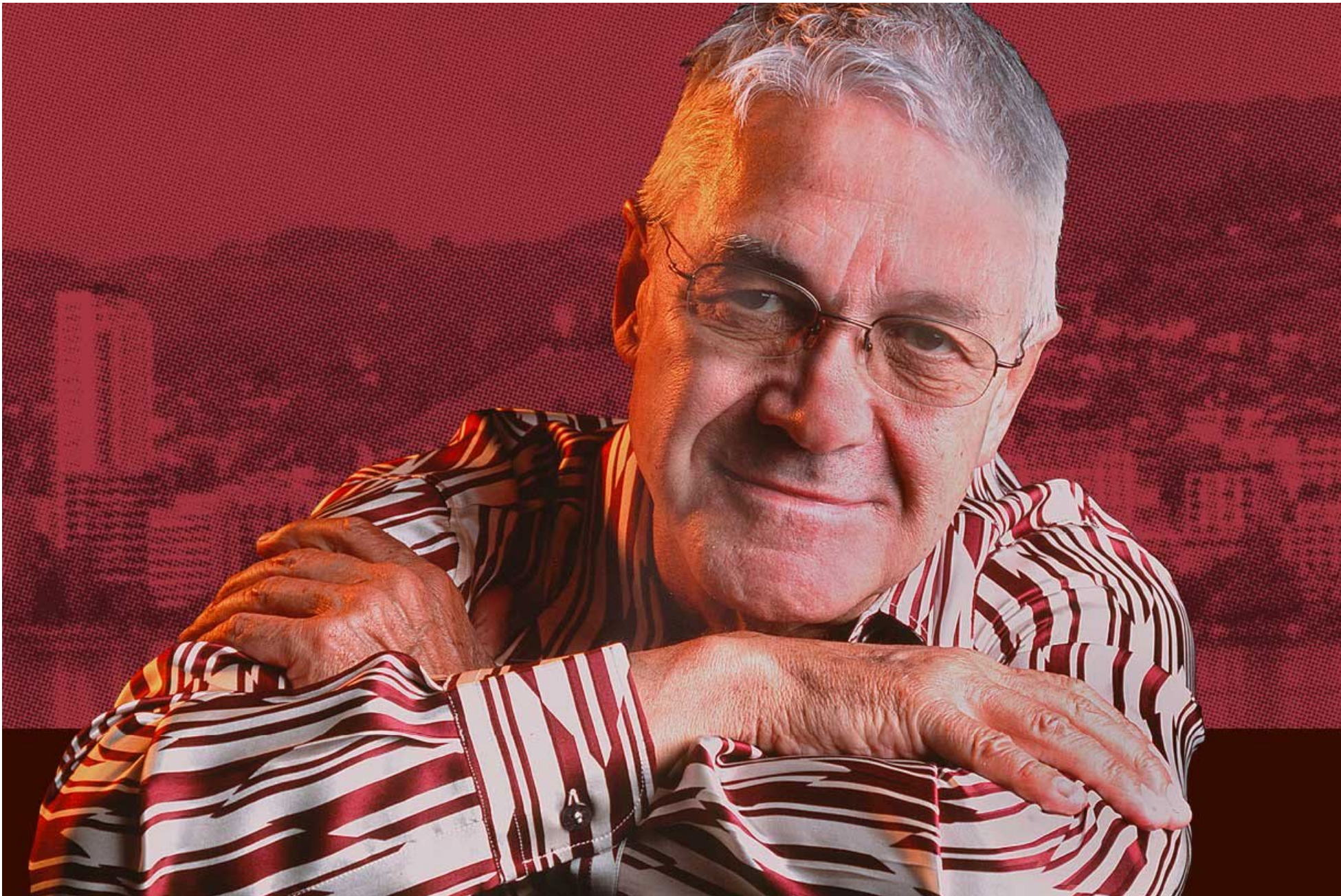
- Per-VM Storage Policy Based Management
- 24-Hr rapid recovery of deleted VMs
- Per-VM performance & capacity planning with Pure1 META

Gain Per-VM Portability

- Easily migrate P→V, V→P, On-Prem→Cloud!



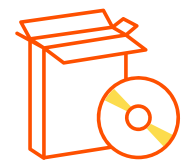
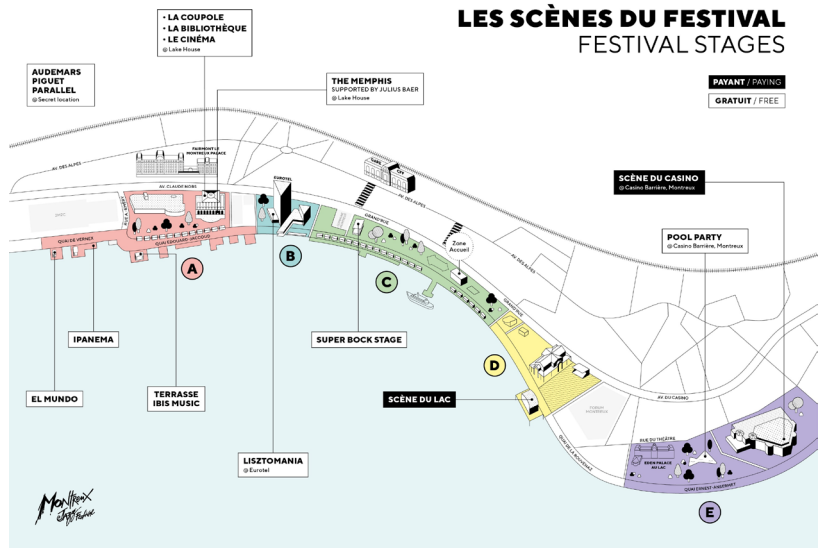




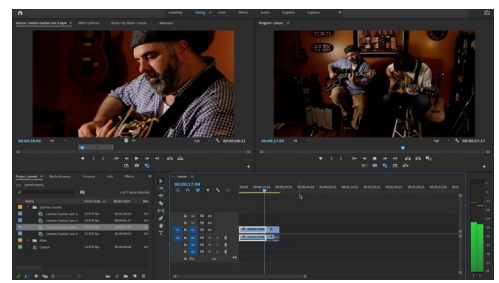
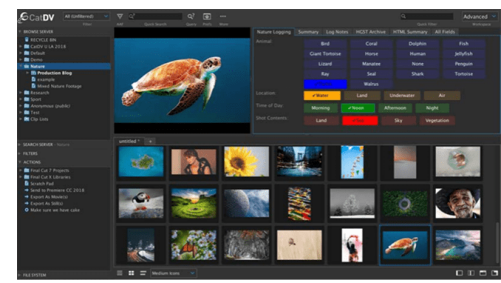
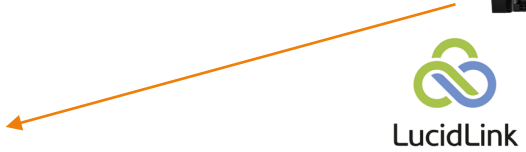




Source: letemps.ch



FlashBlade **II E**™

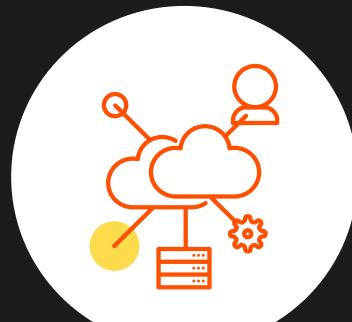




Continue Claude Nobs initiative



Rapid video storage tier (S3 and file)



Video treatment



Video Retrieval and Revival, cultural continuous improvement.

FlashBlade ™



FlashBlade Use Cases

Addressing customer needs across broad set of performance-optimized and capacity-optimized unstructured data use-cases



Data Protection

Rapid restore from backup & ransomware recovery



Enterprise Imaging

AI for image e.g. cancer research and short-term storage



Analytics

Performance optimized
- Splunk SmartStore warm tier
- Elastic hot/warm tier



HPC

Primary & secondary phases of business pipelines



AI/ML

Performance sensitive training and inference data



EDA

Active chip-design projects

Long term retention of data

Long-term Archive (Repository)
E.g. X-rays, MRI

Capacity optimized
- Splunk classic cold tier
- Splunk SmartStore cold tier
- Elastic cold/frozen tier

Capacity optimized data warehouse

Large repository of training data, archive data and raw data

Archive of completed projects including design data, libraries & IP



Analysis



Design



Delivery



Optimize



Lifecycle



Up to Date

Merci!

Des questions? Contactez-nous: it-forum.ch@bechtle.com

