

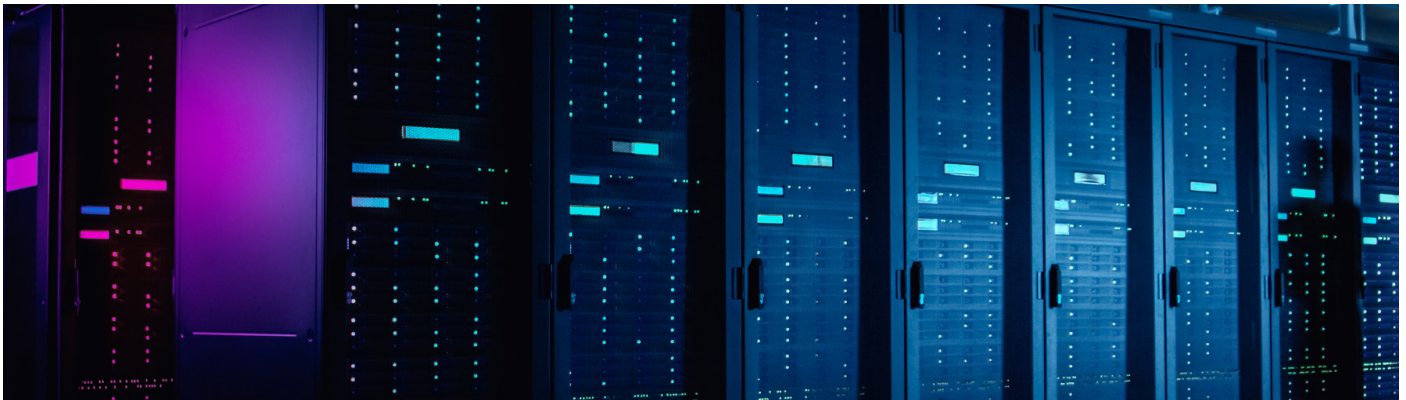


# harbor

In partnership with Bechtel Services



**BECHTEL**



## DATA MANAGEMENT WORKSHOPS

As companies rely increasingly on cloud services, it's vital their data backup and disaster recovery strategies keep pace. This workshop gives you a fresh assessment of your data landscape — and identifies standout opportunities for smarter management and savings.

### Critical data has moved home

Today, data is no longer centralised within organisations' datacentres. Instead, it's often dispersed across cloud applications and providers — from Exchange Online, SharePoint Online, Dropbox and Salesforce, through to public cloud services such as Microsoft Azure or Amazon Web Services. So, where does this leave backup and disaster recovery? Traditionally, these functions focused on servers in the datacentre. But with growing volumes of critical data spread across multiple locations, companies need a backup and DR strategy that answers new challenges.

### Using the cloud to your advantage

Data management is viewed as a core activity but it's not normally associated with innovation. However, this Bytes workshop can prove a game-changer. You'll discover if the public cloud is the answer for your expanding backup and DR needs, thanks to its almost limitless, cost-effective storage. This could solve your data growth challenges, free up valuable IT resources and make the public cloud work for your business.

## THE WORKSHOP

### 3 steps to getting answers

Our data management and cloud consultants will visit your company and spend time with your team, sharing knowledge, exploring ideas and identifying possible solutions.

#### Step 1: Assess

We'll discuss your current data management landscape, applications and locations. We'll baseline your current backup and DR - and look at a data management roadmap.

#### Step 2: Discover

Having understood your needs, we'll look for gaps and potential improvements that could pay off for your business. We'll consider various vendors and their offerings.

#### Step 3: Recommend

We'll align appropriate technologies and services to create a solution. We'll also produce a bespoke report that could support a business case and help with planning.

Want to find out more?

Bechtel UK  
Tel: 01249 467900  
Email: [sales.direct-uk@bechtel.com](mailto:sales.direct-uk@bechtel.com)

Village Green, Methuen Park, Chippenham, Wiltshire SN14 0GF  
[www.bechtel.com/gb](http://www.bechtel.com/gb)



The Bechtel & Harbor Solutions partnership

Together, we simplify and accelerate the design, build and deployment of Data Protection solutions. We help customers find the right solution to meet their objectives and provide expert advice to successfully launch services. We delivers unbiased, expert consultancy and management services mixed with a range of product technologies.