

# Privileged Access Management

## WALLIX PAM

### Centralized Control and Monitoring of Privileged Access to Sensitive Assets

Hackers leverage privileged accounts to infiltrate and spread within organizations. Privileged Access Management (PAM) is a fundamental asset to mitigate cyber-attacks. WALLIX PAM is a leading PAM solution that delivers robust security and oversight over privileged access to critical IT infrastructure. As an agentless solution, WALLIX PAM can be seamlessly deployed from on-premise to private and public cloud infrastructures. WALLIX PAM is also available as a Service offering a more cost-effective and less resource-intensive option.

### Features & Capabilities

#### Reduce the Attack Surface

- Discover assets automatically and remove all local privileged accounts
- Set up authorization rules to supervise critical systems access
- Use the least required privilege to perform tasks
- Attribute privileges "Just in Time" for authorized users

#### Manage Secrets

- Store secrets of human and non-human users securely
- Update passwords with automated rotation based on time and/or usage
- Remove passwords from disks

#### Control Sessions

- Monitor sessions in real time with Session Sharing
- Record all sessions and extract related metadata for analysis
- Raise alarms after malicious activity detection and terminate sessions

#### Audit Activity

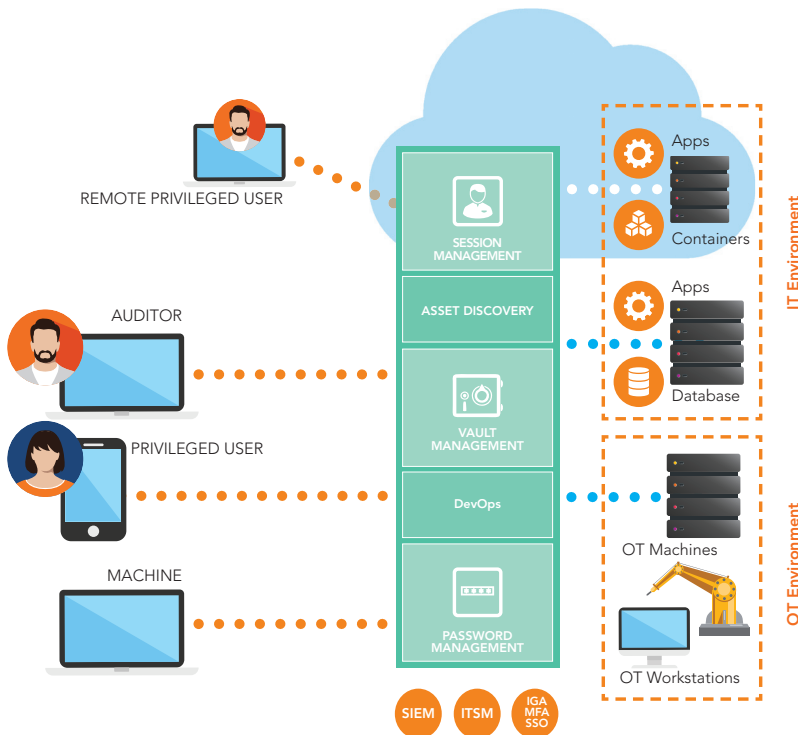
- Manage KPIs with reports and dashboards
- Correlate suspicious behavior with SIEM integration
- Deploy quickly with no interruption to daily workflows

### Technical Characteristics

- > **Encryption Algorithms:**
  - AES-256, SHA2,
  - ECC p256, p381 and p515
  - High-grade keys for proxies
- > **High Availability:**
  - Clustering support
  - Disaster Recovery
  - Enterprise backup system integration
- > **Access and Workflow Management:**
  - AD and LDAP directories
  - Identity and Access
  - Ticketing and workflow systems
  - AD Silos
- > **Authentication Methods:**
  - Username and Password, Kerberos, LDAP, NLA, Web SSO, RADIUS, PKI, SAML
- > **Monitoring:**
  - SIEM integration, SNMP, Email notifications
- > **Public Cloud Environments:**
  - Amazon Web Services (AWS)
  - Microsoft Azure
  - Alibaba Cloud
  - Outscale



## How it Works



# wallixone

## PAM-as-a-Service

Responsibility	Wallix-hosted (SaaS)	Customer-hosted (On prem/cloud/hybrid)
Software ownership	Wallix	Customer
Software installation and management	Wallix	Customer
Software Upgrades and patches	Wallix	Customer
Infrastructure setup and maintenance	Wallix	Customer
Availability	Wallix	Customer
Security	Shared	Customer
Data Management	Customer	Customer

## About WALLIX

WALLIX protects identities and access to IT infrastructure, applications, and data. Specializing in Privileged Access Management, WALLIX solutions ensure compliance with the latest IT security standards and protect against cyber-attacks, theft and data leaks linked to stolen credentials and elevated privileges.

## Benefits



**Defuse internal and external threats**

Centralize secure management of privileged users and critical systems.



**Deploy in all environments**

Integrate seamlessly in on-premise, hybrid and cloud-native infrastructures. WALLIX also offers SaaS-delivered PAM.



**Secure as you grow**

Scale your infrastructure without any risk.



**Ensure regulatory compliance**

Avoid penalties by protecting and tracing critical data access.

WWW.WALLIX.COM



# wallix