



//Century Platform

Gain a comprehensive
overview of your
software licences.

powered by



Further information:
bechtle.ch

Bechtle Schweiz AG
Phone +41 848 820 420
info.ch@bechtle.com | bechtle.ch

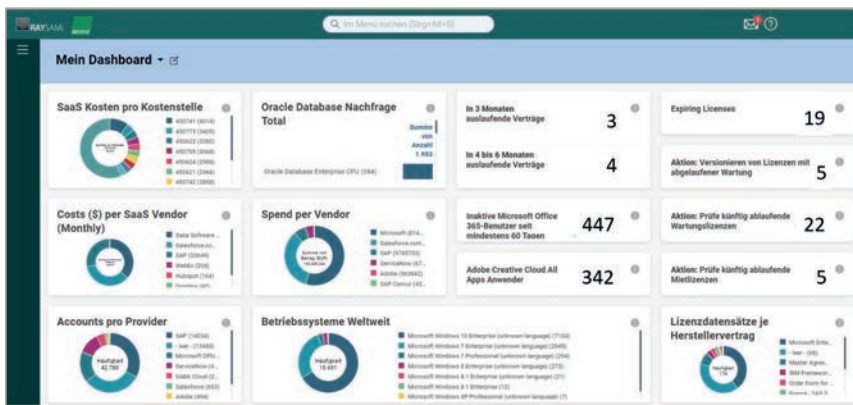
Basel | Bern | Mägenwil | Morges | Petit-Lancy | Pratteln | Rotkreuz | St.Gallen

Your strong IT partner.
Today and tomorrow.



BRING ORDER TO THE CHAOS AND ACHIEVE FULL TRANSPARENCY INTO CRUCIAL KPIS.

IT landscapes are constantly changing making it ever-more difficult for businesses to keep an eye on their licensing situation. Durations, maintenance information and automatic extensions often aren't managed centrally and have to be manually collected, which takes time. In order to give your stakeholders the information they need in order to make strategic decisions, action has to be taken.



Century Platform records all software purchases in a targeted manner so that you can centrally manage your entire portfolio with ease. Is free for all customers that procure their software from Bechtle Schweiz AG.

YOUR BENEFITS AT A GLANCE.



Maximum automation.

No matter if vendor, duration, product information. Costs or termination/extension dates, your Bechtle Schweiz purchases are automatically transferred and displayed.



Complete transparency.

Stay flexible, keep your licence assets under control and benefit from complete transparency into your company's purchasing and order processes.



Insightful reporting.

Leverage the numerous dashboards and reports provided or customise your own views. Manage your licensing volume and plan your investments.

Your strong IT partner.
Today and tomorrow.



EFFICIENT SOFTWARE LICENSING MANAGEMENT.

Licences that aren't covered by licensing management and whose product usage rights can therefore not be correctly categorised put the brakes on efficient licence planning and undermine the real value of licensing management.

Century Platform is the first catalogue-based and licence-oriented technology that automatically manages all licences despite complex licensing metrics.

Anzahl	Hersteller (Produkt)	Produktname (Produkt)	Herstellerartikelnummer (Artikel)	Herstellervertragsnummer (Vertrag)
420	Oracle	Oracle Database Enterprise CPU	D8EE-#90C-FU-P-S	
35	Oracle	Oracle Database Standard CPU	D8EE-#90C-FU-P-S	
53	SAP	SAP Platform User / SAP Application Platform Standard User	7009602	123456789
184	Microsoft	Microsoft Project	Q79-Q1812	E1512345
3.150	Microsoft	Microsoft Office Professional Plus (Single Language)	269-05823	E1512345
872	Microsoft	Microsoft Visio Professional	D87-Q1150	E1512345
50	Microsoft	Microsoft Project Server User CAL	H21-00591	E1512345
3	Microsoft	Microsoft Project Server Server	H22-00475	E1512345
203	Microsoft	Microsoft Project Professional	H30-00238	E1512345
20	Oracle	Oracle Database Enterprise Options Real Application Cluster CPU	BAC-#90C-FU-P-S	
400	Oracle	Oracle Database Enterprise Options Real Application Cluster CPU	BAC-#90C-FU-P-L	
203	Microsoft	Microsoft Project Server CAL	H30-00238	E1512345
1.090	Microsoft	Microsoft SQL Server Enterprise Core	7.20-00343	E1512345

YOUR BENEFITS.

- Dashboard with total values
- Vendor and product views
- Monetary display of licences, maintenance and subscriptions
- Cost developments in the coming months
- Maintenance periods
- Licence lifecycle

BECHTLE TAKES ON OPERATIONS.



Century Platform is run from the Bechtle Schweiz AG data centre using the professional Software Asset Management technology from our partner, Raynet as a basis.

Our ERP system transmits information related to licence purchases to Century Platform every day. You can also add licences you purchased elsewhere so you can view everything via a web GUI.

Your strong IT partner.
Today and tomorrow.



CENTURY PLATFORM REQUIREMENTS.

If you, as our customer, fulfil at least one of the following requirements, you are entitled to use Century Platform free of charge:

MS EA or MPSA contract concluded with Bechtle	Licence revenue => CHF 20,000 per year	Procurement of an annual SAM Baseline Service	Procurement of optional Century Platform services
---	--	---	---

CENTURY PLATFORM ONBOARDING.

Our licensing specialists are on-hand to offer support using Century Platform plus we'll ensure that your business and licensing purchases are correctly rendered. If you'd like us to add licences purchased elsewhere, our SAM consultants are here to help.

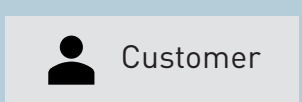
SIMPLICITY, SECURITY AND INNOVATION ALL ROLLED INTO ONE.

Bechtle environment

The screenshot shows a 'Microsoft Dashboard' with the following data:

- Nutzer mit zugewiesenem Microsoft 365 E3 Plan:** 6.625
- Office 365:** 13.793
- Visual Studio MSDN:** 16
- MSDN:** 83
- Visio:** 434
- Project:** 224
- Windows Server Datacenter:** Häufigkeit 43 (Cluster-Big (20), Cluster-ORACLE-BETA791 (9))
- Microsoft Project:**
 - Microsoft Project (191)
 - Microsoft Project 2010 Standard (unknown language) (9)
 - Microsoft Project Professional (2)
 - Microsoft Project 2016 Professional (unknown language) (2)
 - Microsoft Project 2013 Standard (unknown language) (0)
 - Microsoft Project 2013 Professional (unknown language) (2)
- Microsoft Office:** Häufigkeit 7.795
 - Microsoft Office 2016 Professional Plus (unknown language) (621)
 - Microsoft Office 2010 Professional Plus (unknown language) (531)
 - Microsoft Office 2016 Professional Plus (105)
 - Microsoft Office 2013 Professional Plus (unknown language) (154)
 - Microsoft Office 2007 Professional Plus (unknown language) (65)
 - Microsoft Office 2013 Standard (unknown language) (53)
 - Microsoft Office 2010 Standard (unknown language) (42)
- Microsoft SQL Server:** Summe von Lizenz 23%
 - Microsoft SQL Server 2016 Enterprise Core (unknown language) (203)
 - Microsoft SQL Server 2014 Enterprise Core (unknown language) (27)
 - Microsoft SQL Server 2016 Standard Core (unknown language) (6)
 - Microsoft SQL Server 2014 Express Server (2)
 - Microsoft SQL Server 2008 Standard CPU (unknown language) (4)
 - Microsoft SQL Server 2008 Express Server (3)
 - Microsoft SQL Server 2017 Enterprise Core (3)
- Microsoft Verträge:** 6
- Auslaufende Microsoft Verträge nächste 90 Tage:** 0
- Microsoft Lizenzen:** 74

Manual data entry of additional licences



Your strong IT partner. Today and tomorrow.



USE THE CENTURY PLATFORM FOR ADDITIONAL OPTIONAL SERVICES.

CONTRACT MANAGEMENT.

We maintain your licence certificates and contracts for you.

COMPLIANCE MANAGEMENT.

Keep an eye on your compliance and learn, how to close gaps.

INVENTORY MANAGEMENT.

We offer you a comprehensive representation of your actual IT infrastructure with Inventory2go.

OPTIMIZATION.

We help you to continuously improve software data, processes and results.

BASELINE.

Determine your SAM status quo with user-defined defined reports on gaps and improvements.

SOLUTION AS A SERVICE.

Our fully managed offering with SAM tool, hosting and ongoing operation

SAM AS A SERVICE.

Our complete offer with SAM tool, hosting, operational business. Outsource the entire SAM process to us.

Why choose Bechtle.

A leading IT service provider in Switzerland, Bechtle Schweiz AG is your go-to partner for all things IT—from consulting to infrastructure, from services to software, on the ground and in the cloud. Trusted by small to large enterprises and public institutions,

Our offering spans the entire plan-build-run lifecycle of corporate IT, backed by top-level vendor certifications.

Why Raynet.

As a global software vendor with market-leading solutions and complementary managed services, we make successful end-to-end management of IT projects and operations possible.

Following the mission "Discover to Manage", our vision is that all companies worldwide achieve transparency and security as well as the optimisation of their IT investments by using our technologies.

Bechtle Schweiz AG

Phone +41 848 820 420

info.ch@bechtle.com | bechtle.ch

Basel | Bern | Mägenwil | Morges | Petit-Lancy | Pratteln | Rotkreuz | St.Gallen

Your strong IT partner.
Today and tomorrow.

