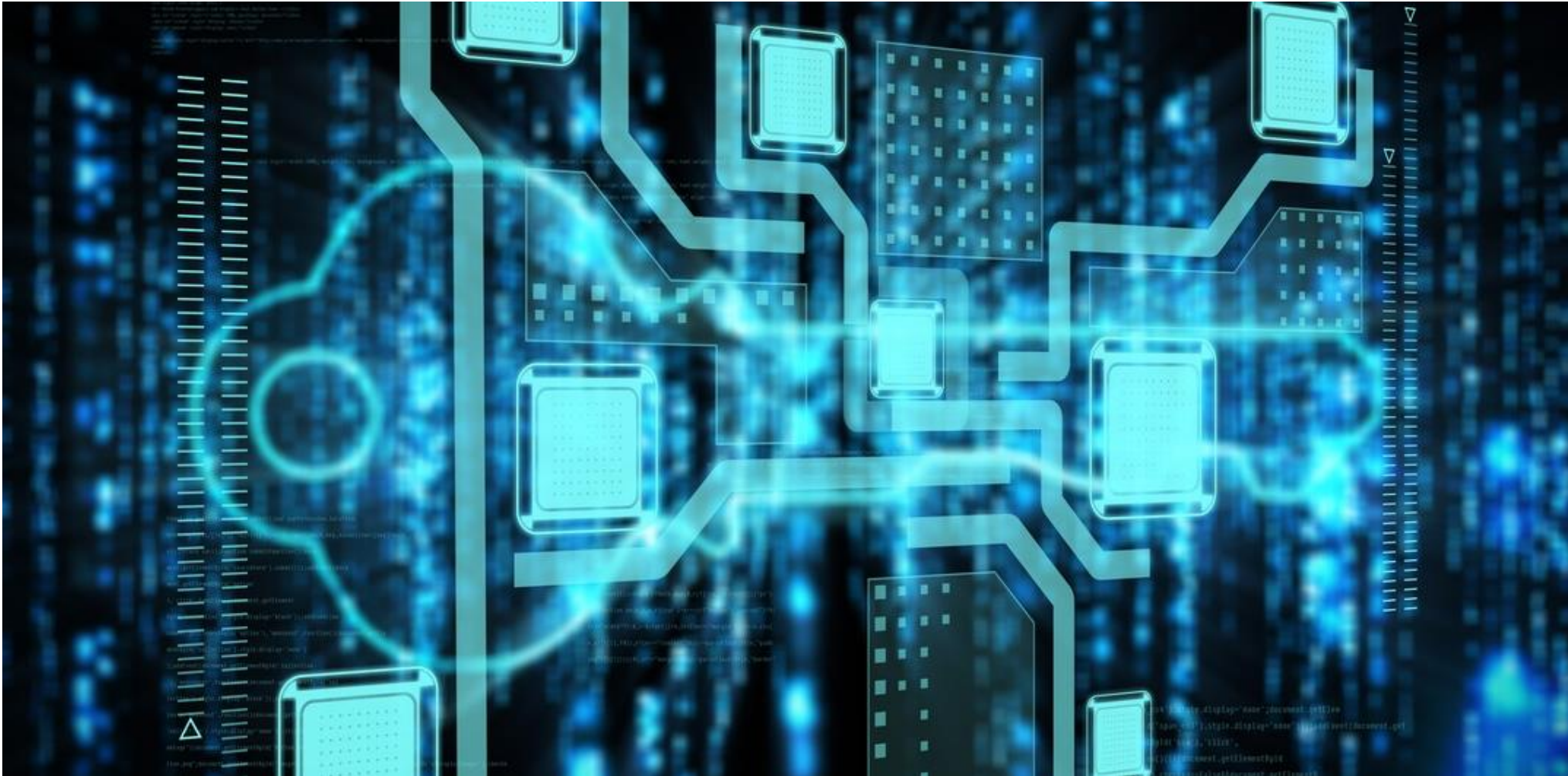


Webinar: Veeam & Bechtle: Kasten K10, 08.09.2021.



Herzlich willkommen.



Arnold Sutter

Consultant

Bechtle Schweiz AG



Stephan Herzig

Enterprise Technical Advisor

Veeam Software Group
GmbH

Agenda

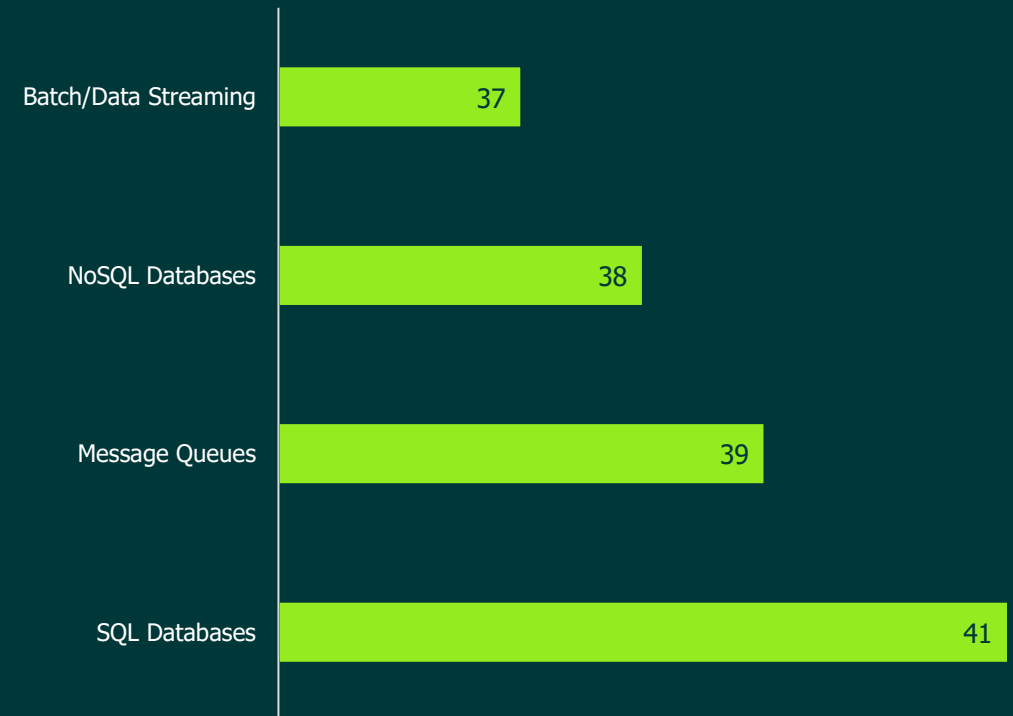
1. Einführung
2. Betrieb
3. Datenmanagement
4. Demo

Kubernetes and Backup

Kubernetes Backup Myths

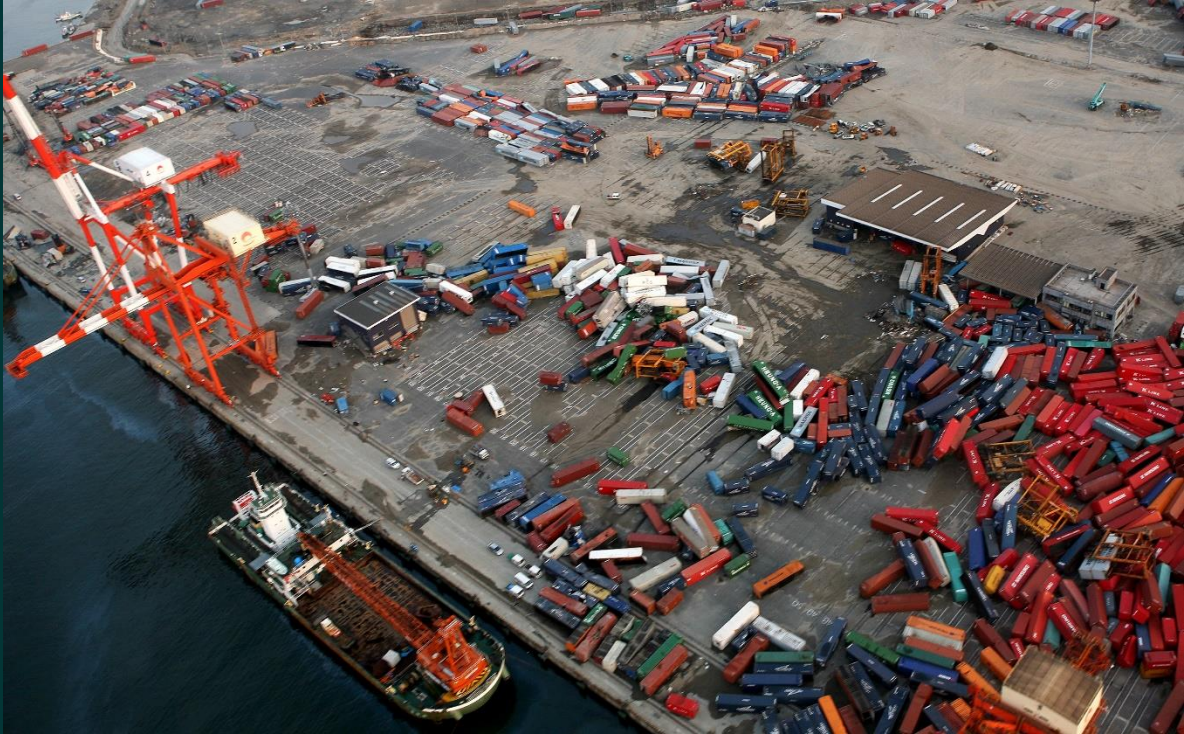
- Everything is stateless
- High availability is my backup
- Replication is enough

% Stateful application type deployed in Kubernetes



Protection Gaps

Reasons why we do need backups



- The underlying storage is not failure proof
- Accidental deletion
- Malicious loss
- Application or infrastructure bugs, corrupting some or all of the data
- Multiple platforms to protect

The 3-2-1 Rule

3



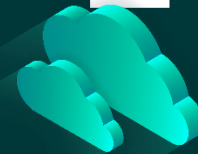
3 copies of
your data

2



2 different
types of media

1



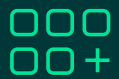
1 copy offsite

Kasten K10

Kasten K10

Kubernetes backup and data mobility made easy

K10 PLATFORM



Application
Discovery



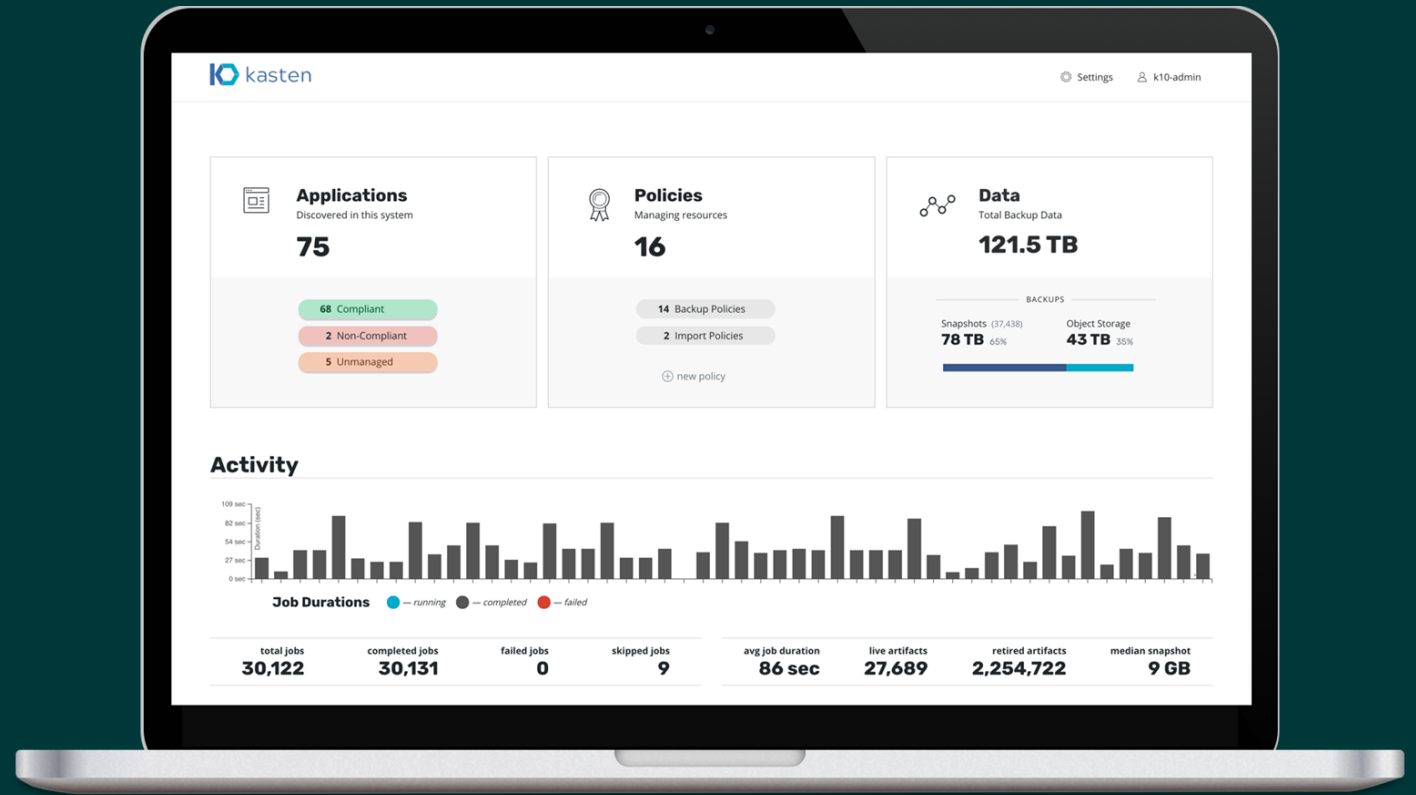
Policy-driven
Automation



Ease of Use,
Simple UX

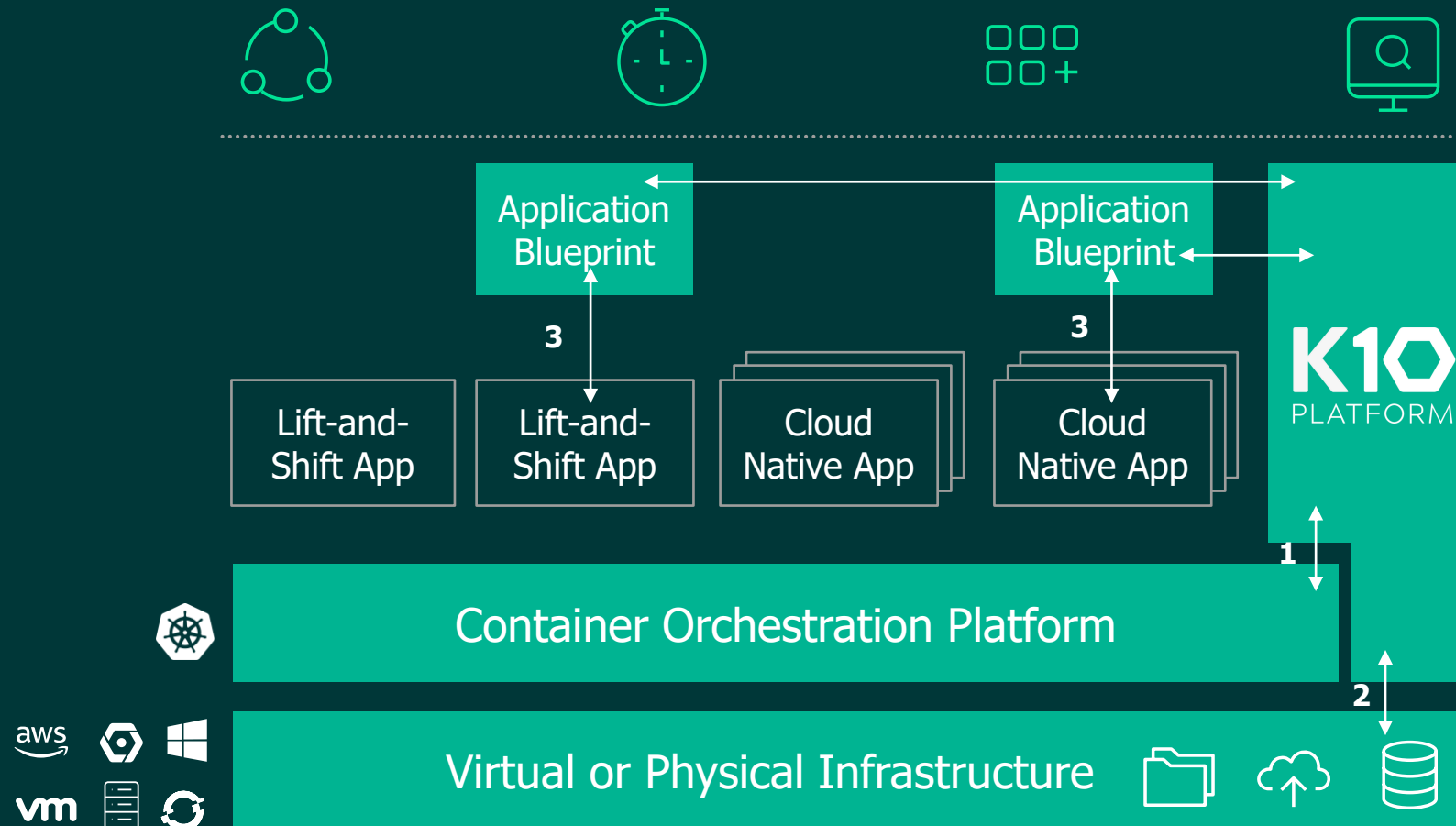


End-to-End
Security



K10 architecture

A high-level overview



1 Orchestrator APIs

Uses Kubernetes API to discover applications and underlying components and perform lifecycle operations

2 Infrastructure APIs

No proprietary storage layer. Integration with infrastructure specific APIs for:
Block storage provider - Snapshot functionality, snapshot and block copy
Object/file provider - S3-compatible object store or other file storage like NFS for artifacts

3 Application Framework

Optional agentless application-centric hooks can be invoked by easy-to-use blueprints

Easy Setup

Pre-Flight Check

```
#curl https://docs.kasten.io/tools/k10_primer.sh |  
bash
```

Setup

```
#helm repo add kasten https://charts.kasten.io/
```

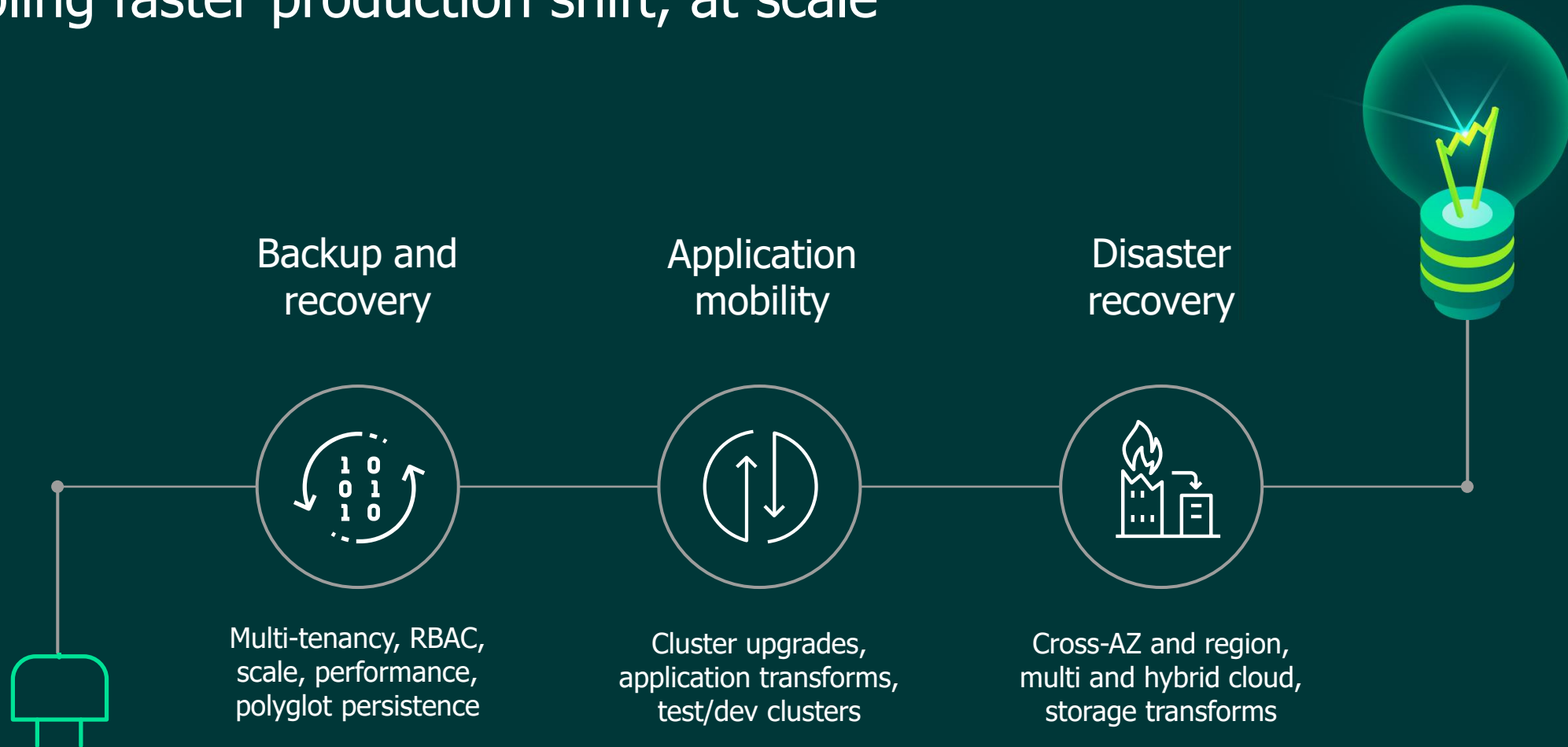
```
#kubectl create namespace kasten-io
```

```
#helm install k10 kasten/k10 --namespace=kasten-io
```

Data Management

Kubernetes-native data management

Enabling faster production shift, at scale



Data Services



Distributions



Container Orchestration



kubernetes

Storage Infrastructure



Google Cloud Storage

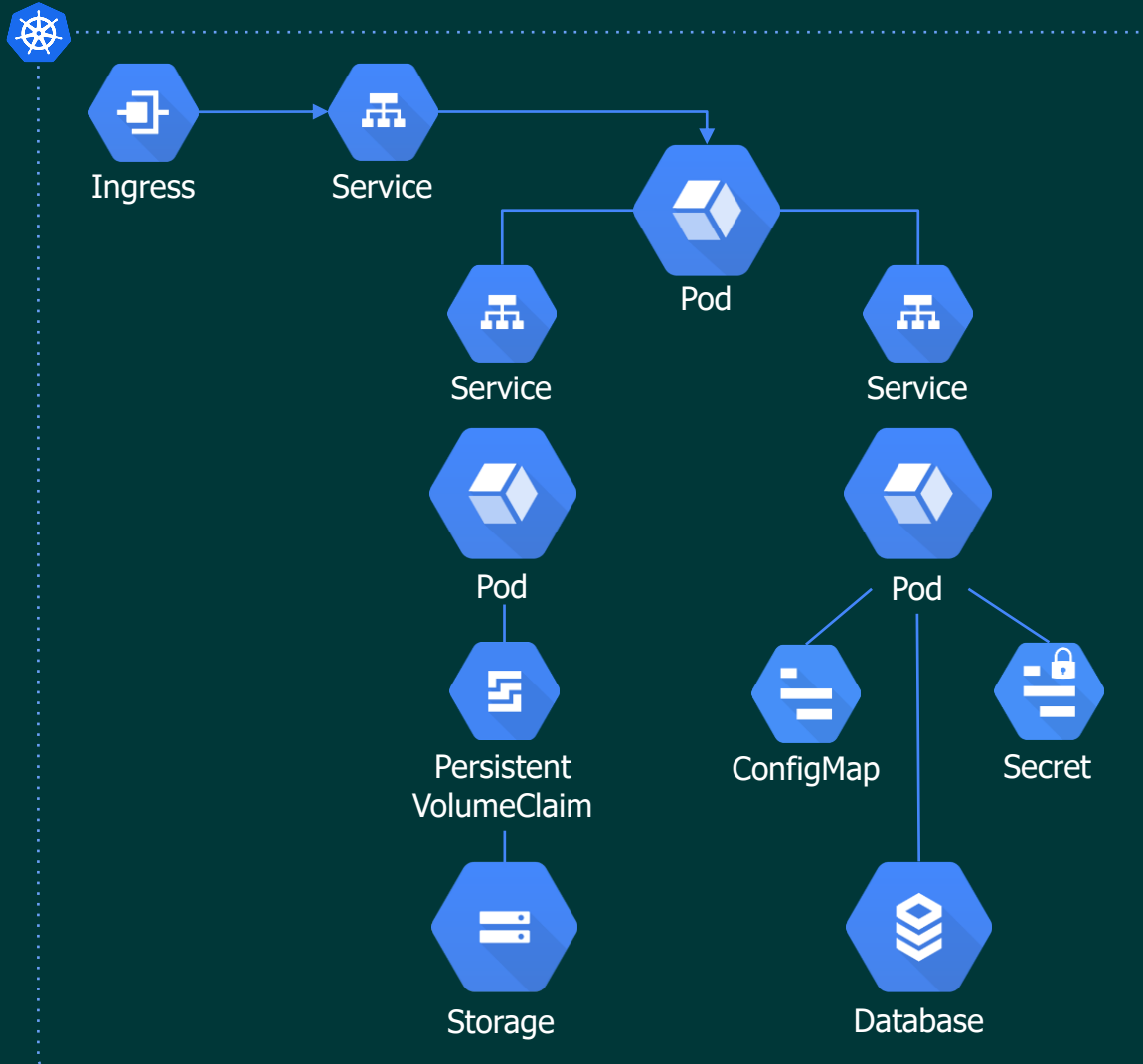


K10
PLATFORM

Data
Management
Platform

Kasten approach: Focus on complete application

Kubernetes resources and persistent state



Applications are the operational unit

- Perform complete application capture
- Abstract underlying infrastructure
- Perform coordinated operations

K10 consistency spectrum

range of available options



Crash
consistent

Storage snapshots



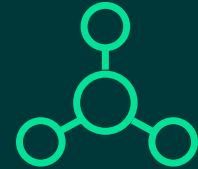
“App”
consistent

Freeze data service
Storage snapshot
Unfreeze data service



DB
consistent

Logical dumps via
data service-specific
tool (e.g., pg_dump)



System
consistent

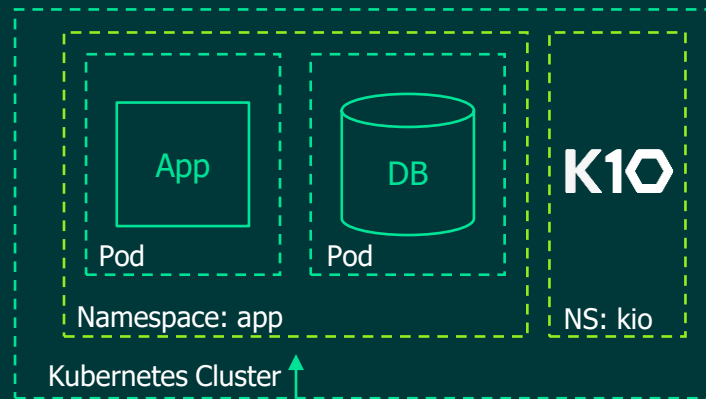
Full app capture
Combination of tools across
data and storage layers

Seamless application transformation

application portability requirements



Restore



App + Data
Snapshot

Across:

Storage Systems

Kubernetes Versions

Seamless application transformation

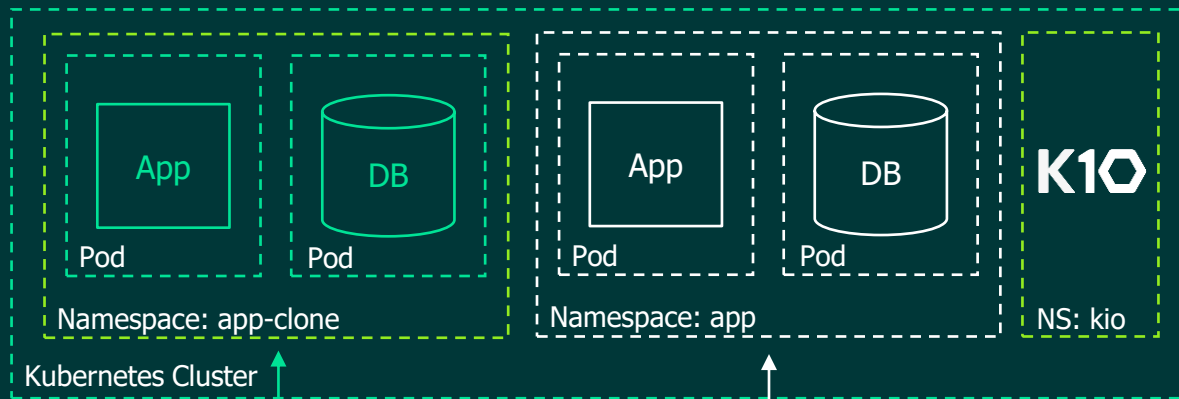
application portability requirements



Restore



Clone



Across:

Storage Systems
Kubernetes Versions

Namespaces
Availability Zones

Seamless application transformation

application portability requirements



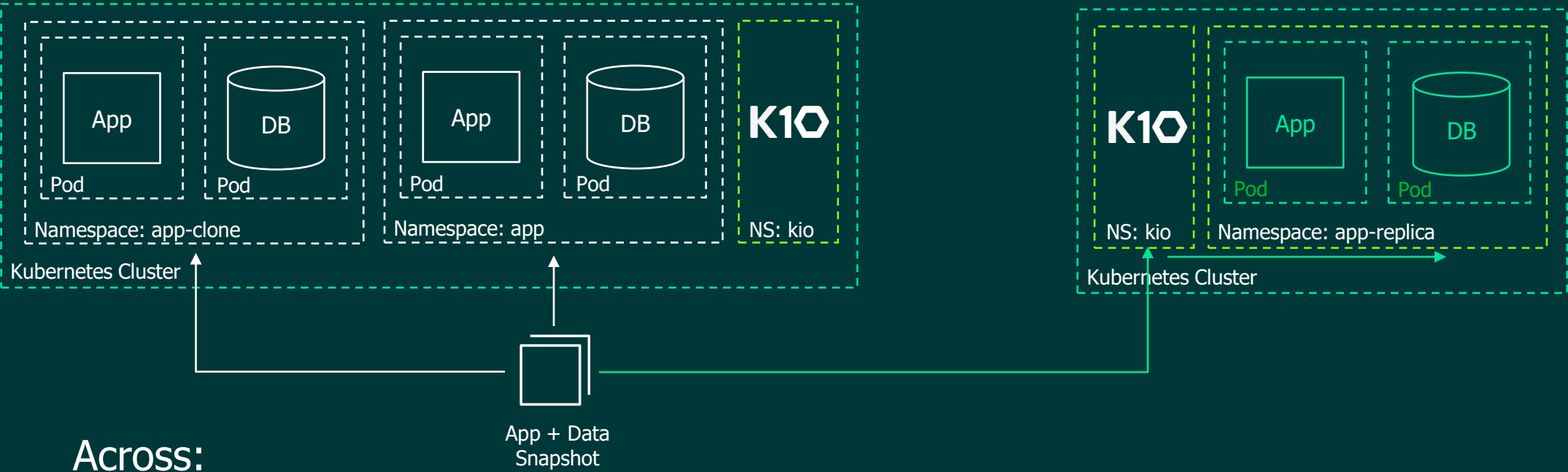
Restore



Clone



Migrate



Across:

Storage Systems
Kubernetes Versions

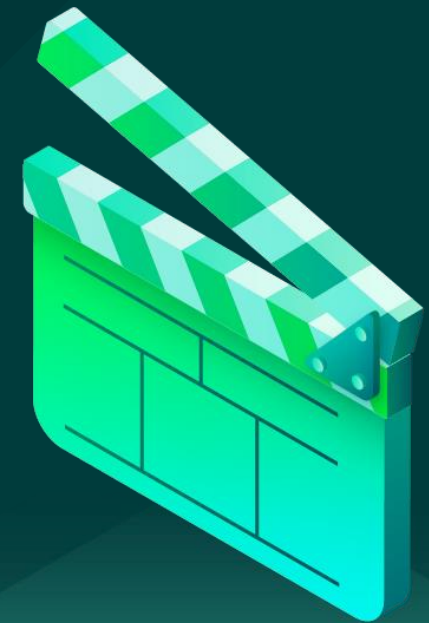
Namespaces
Availability Zones

Clusters and Regions
Cloud Providers

Kubernetes Distributions
Prod to Dev Clone

Demo

Lights, camera, action



FREE

FREE Kubernetes backup

Two ways to try Kasten K10

1

Hands-on Lab: Take a Kasten K10 test drive

Learn how Kubernetes-native application backup and recovery works. Take a live test drive of K10, Kasten's data management platform for all your Kubernetes-native backup, DR and application mobility needs. Complete the form and receive an email containing a link to the Kasten K10 test drive.



2

Install from the cloud — 50 nodes for one month, **10 FREE forever**

K10 editions (Starter, Enterprise Trial and Enterprise)
The default Starter edition, provided at no charge, is functionally the same as the Enterprise Trial and Enterprise editions but is limited from a support and scale perspective.



Besten Dank! Stellen Sie uns Ihre Fragen.



Weitere Infos:
bechtle.com/ch

Vorschau.



- 16.09.2021 Webinar: IoT - AI im Produktionsumfeld
- 21.09.2021 Webinar: Azure Readiness - Azure DevTest Lab
- 21.10.2021 Webinar: Nutanix Update

Mehr Infos unter bechtle.com/ch/ueber-bechtle/events

Handeln Sie jetzt. Kontaktieren Sie uns.

Bechtle Schweiz AG
Tel. +41 56 418 33 33
bechtle.ch/kontakt

Arnold Sutter
Consultant, Bechtle Schweiz AG
arnold.sutter@bechtle.com